

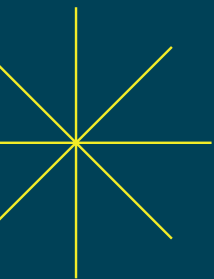
Business Focus

OFFICIAL PUBLICATION OF COMMERCE LEXINGTON INC. | FEBRUARY/MARCH 2026 | VOLUME XXXIV, ISSUE II



Local Business Leaders Discuss Leadership

PAGES 6-7



INSIDE THIS ISSUE:

God's Pantry Food Bank Hosts Business Link on March 5th

An Evening With Commerce Lexington Recap & Photos

NEW EVENT: Adapt. Compete. Grow. A Small Business Forum



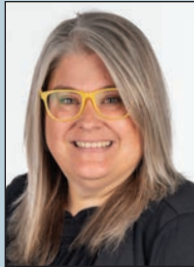
 commerce
lexington®

commercelexington.com



Dawn Flickinger Marks 20 Years of Service With Commerce Lexington

Commerce Lexington is proud to recognize Dawn Flickinger for her 20 years of service to the organization and our community. As our long-time Manager of Accounts Receivable & Member Information, Dawn supports the operational, financial, and administrative functions of the Membership & Engagement Division. She has played a key role in ensuring accurate financial processes, reliable member data management, and smooth execution of division programs, events, and partnership activities.



DAWN
FLICKINGER

Lexington program, during which she participated in the Once Upon a Story group project aimed at fostering childhood literacy through book drives and distribution to local schools and community groups, promoting reading and access to books for children in the area. Dawn is a past member of the Leadership Lexington Steering Committee and has been a volunteer since 2012 with Radio Eye, which broadcasts the reading of current news, public service and general interest programming to people who are blind and print-disabled. She graduated from the regional Leadership Central Kentucky program in 2025.

Dawn is a 2012 graduate of Commerce Lexington's Leadership

Mark Turner Celebrates 25 Years of Leading Communications Efforts

Commerce Lexington is proud to recognize Mark Turner for his 25 years of service to the organization and our region. Since his hiring in January 2001, he has coordinated Commerce Lexington's communications initiatives to promote its programs, services and policy positions, as well as the region's positive attributes, to member investors and local and national media. Mark has also managed many print publications and digital communications, built Commerce Lexington's social media presence from the ground up, and provided promotional and design support for a variety of events.



MARK TURNER

organization across the Commonwealth. Under his steady leadership, Commerce Lexington has been recognized with several awards for communications excellence from a variety of organizations, and he was instrumental to our recognition as Chamber of the Year by the Association of Chamber of Commerce Executives (ACCE) in 2016."

Mark is a 2003 graduate of Commerce Lexington's Leadership Lexington program and was commissioned to the Honorable Order of Kentucky Colonels in 2016 by then Governor Matt Bevin. He is a proud member of the Lexington History Museum's board of directors, and he has a bachelor's degree from the University of Kentucky in political science with a minor in history.

Commerce Lexington President and CEO, Bob Quick, said, "I can say without a doubt that Mark's efforts have raised the profile and visibility of our

Business Focus will be published 7 times in 2026, including January, February, April, June, August, October, and December by Commerce Lexington, 330 East Main Street, Suite 100, Lexington, KY 40507. Phone: 859-254-4447.

2026 Chair of the Board:

Nick Nicholson
Member
Stoll Keenon Ogden PLLC

Publisher:

Robert L. Quick, IOM, CCE
President & CEO
Commerce Lexington

Editor: Mark E. Turner
Communications Specialist: Liz Bennett
Printing: Post Printing
Mail Service: SouthEast Printing & Mailing Service, LLC (2610 Palumbo Drive)

Subscriptions are available for \$12 and are included as a direct benefit of Commerce Lexington membership. Business Focus (USPS 012-337) periodical postage paid at Lexington, Kentucky.

POSTMASTER: Send address corrections to Business Focus, Commerce Lexington, P.O. Box 1968, Lexington, KY 40588-1968.

Advertising:

For advertising opportunities in Business Focus, contact Mark Turner at mturner@commercelexington.com. Only Commerce Lexington members can advertise in this publication. By promoting your business here, you'll be able to reach the movers and shakers in and around the Greater Lexington region.

Personnel Updates:

Submit your company's awards and milestones or personnel changes and additions to mturner@commercelexington.com. Personnel news might include promotions, additions, awards and milestones, recognitions and certifications and/or appointments. Information is published only as space permits.

TRAVELHOST

IS NOW THE ALL NEW

Explore

The Visitors Guide to the Bluegrass

FEATURING THE BEST IN

- EVENTS
- ATTRACTIONS
- SHOPPING
- DINING
- RELOCATION SERVICES

Reach

1,000's

of Visitors Daily!

859-351-6728





ECONOMIC DEVELOPMENT

Submitted by Gina Greathouse, Niki Goldey, Hannah Jackson, Falon McFarland, and Cheryl Weiss

Strengthening Our Regional Economy Through Strategic Growth

Commerce Lexington's Economic Development team works to support business expansion and retention, encourage entrepreneurial start ups, and create new jobs that strengthen the economic vitality of the Greater Lexington Region. These efforts expand access to quality employment opportunities and support long term, sustainable growth.

Our strategy is guided by a Strategic Targeted Analysis prepared by Economic Leadership, Inc., which evaluates regional industry clusters and market trends to identify sectors best aligned with the Greater Lexington Region's strengths. From hosting local networking events to engaging site selection consultants nationwide, our team remains focused on advancing the following strategic industry targets:

- **Advanced Manufacturing & Automotive**
- **AgBio & AgTech**
- **BioPharma**
- **Business & Financial Services**
- **Marketing & Design Services**
- **Food & Beverage Processing**
- **Warehouse & Logistics**

Throughout the year we will highlight activities within our target industries in *Business Focus*, beginning with BioPharma, which refers to the development and manufacturing of medical drugs using living organisms—such as human or animal cells, bacteria, or yeast—through advanced biotechnology. The Greater Lexington Region is already home to leading BioPharma companies, including Kindeva, Catalent, and Piramal Pharma Solutions.

Economic Leadership, LLC's Industry Analysis study showed a strong regional concentration in BioPharma, with significant



In May 2025, Kindeva marked a key milestone in the company's continued investment in Kentucky. The company's Lexington facility celebrated the site's full integration into the organization's global network and its growing role in advancing nasal drug delivery innovation. (Photo courtesy of Kindeva)

opportunity for continued growth as the industry expands nationally and globally. The sector is also among the highest paying industries, directly supporting our goal of raising median wages across the region.

To build on this momentum, Commerce Lexington has focused on strengthening and connecting the regional BioPharma ecosystem through initiatives such as the Bio Consortium network group launched last year. Our team also participates in key industry trade shows and conducts outreach to site selection consultants to position the region as a premier destination for business growth and investment. Additionally, a targeted digital awareness campaign launched in 2025 continues through the first half of 2026, reaching C suite BioPharma leaders across the United States.

We are also pleased to welcome **Simon Scholte**, Vice President and General Manager of Kindeva, to the Commerce Lexington Board of Directors. His leadership and engagement through the Bio Consortium have been instrumental, and we are excited to have him join the board.

To find out more about Commerce Lexington's economic development efforts, its strategic targets, and the advantages of doing business in the Greater Lexington region, visit www.locateinlexington.com.



SIMON SCHOLTE



In June 2025, Piramal Pharma Solutions broke ground on the expansion of its Lexington facility, which specializes in sterile compounding, liquid filling, and lyophilization for sterile injectable drug products. (Photo by Commerce Lexington staff)



Des Moines, Iowa

2026 LEADERSHIP VISIT

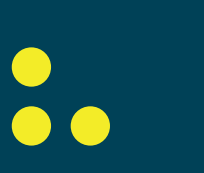
Delegation to Study Des Moines, Iowa, June 10-12

Commerce Lexington has announced that the **2026 Leadership Visit presented by Central Bank** will take



us to **Des Moines, Iowa**, from **June 10-12**. Greater Des Moines (DSM) is vibrant, growing, and experiencing tremendous momentum. It appears on many of the same top economic rankings as the Greater Lexington region. Metrics such as gross domestic product growth, population growth and employment growth show DSM as one of the fastest-growing and strongest metros in the Midwest. Register on-line now at commercelexington.com. Full registration includes charter air travel, meals as outlined in the agenda, and two nights' accommodations at Hotel Fort Des Moines (1000 Walnut St., Des Moines, IA 50309).

EVENTS



MARCH 5 | 4:00 - 6:00 P.M.

God's Pantry Food Bank Hosts Next Commerce Lexington Business Link

Food insecurity impacts a lot of families here at home and across Kentucky. Each day, God's Pantry Food Bank (2201 Innovation Drive)



empowers more than 500 partner food pantries and meal programs across 50 counties in Central and Eastern Kentucky to assist with food needs. Its mission is to reduce hunger by working together to feed Kentucky communities.

During the next Commerce Lexington Business Link event on **Thursday, March 5**, from 4:00 - 6:00 p.m., participants will get a first-hand look at God's Pantry's newly renovated facility that has significantly expanded the organization's ability to store,

prepare, and distribute fresh, healthy food. The Food Bank is now equipped to meet the current need of 50 million meals and scale up to 60 million meals

annually, bringing the organization closer to its vision: a nourished life for every Kentuckian.

TO REGISTER:

The cost to attend is \$10 for Commerce Lexington members, \$15 for non-members (payable at the door). You can also pre-register on-line at commercelexington.com. **NOTE: NO REFUNDS WILL BE GIVEN FOR ON-LINE REGISTRATIONS.**



**A CENTURY OF TRUST.
A FUTURE OF POSSIBILITIES.**

DISCOVER INDEPENDENCE BANK.

Since 1909, growing from two small banks into a thriving financial organization with 400 employees and \$3.8 billion in assets, we're a top five Kentucky-based bank, and have the expertise and scale to meet the needs of businesses across our 26 locations.

Deeply committed to supporting our communities, we reinvest over \$1 million annually to help them go forward, by giving back. We combine a legacy of trust with innovative solutions to help you and your business succeed.



Independence Bank

MEMBER FDIC

LEXINGTON
GOODWIN SQUARE
444 E. MAIN ST.

SUITE 108
1776BANK.COM
(859) 967-1776





LEADERSHIP: Leaders Discuss What Makes an Effective Leader

Compiled by Mark Turner, Commerce Lexington

Leadership is often difficult to describe to someone. Sure, there are attributes that many great leaders have, but to boil it down to a succinct definition isn't the easiest thing to do. A quick on-line search yielded the following: Leadership is the art of motivating, influencing, and guiding individuals or teams toward achieving a shared goal or vision. Anyone can

be a leader, and we know great leadership when we see it, but what makes a leader successful and what techniques or places are available to sharpen one's leadership skills? In this feature, we've asked a few well connected people who are leading their own companies and businesses in the community to describe what leadership means to them and how individuals can prepare for leading their own teams.



MARY-ALICHA WELDON
Lexington City President
Fifth Third

Mary-Alicha Weldon has worked with Fifth Third for more than 30 years and currently serves as Lexington City President and head of Commercial Banking for Kentucky. She said her interest in finance was influenced by her father's work in finance, real estate, and the stock market. It was a path that her and siblings followed while studying business finance at the University of Kentucky. She earned both a bachelor's degree and her MBA at UK, which ultimately sparked her interest in a career in banking.

The daily responsibilities in her current role include driving growth and profitability for the commercial bank, building and maintaining client relationships and community partnerships, leading strategic initiatives across Kentucky, and managing and developing high-performing teams. Weldon said that challenges come from the fact that the banking industry is highly regulated, while advancements to the banking landscape are constantly being enhanced and reshaped by technology.

What has helped enhance your leadership skills?

"Board involvement has been instrumental in strengthening my leadership skills," said Weldon. "I've had the privilege of serving on numerous boards in Central Kentucky, including Commerce Lexington, CHI Saint Joseph Health, Blue Grass Airport, and the Lexington Industrial Authority, where I currently serve as board chair." In 2026, Mary-Alicha was named to Commerce Lexington's Executive Board as chair-elect.

What can people do or where can they go to hone their leadership skills in the community?

"Programs such as Leadership Lexington and Leadership Kentucky are excellent resources for developing leadership skills and building connections across the region and state. Additionally, the annual Women's Summit hosted by the Kentucky Chamber of Commerce offers valuable networking opportunities and professional development for leaders across industries."

What is your leadership style?

"My leadership style focuses on uniting teams around a shared vision, fostering meaningful opportunities for growth and development, and leading with humility, empathy and a commitment to leading by example."

What makes an effective leader?

"A strong leader does not need to be the loudest voice in the room or always be right. Instead, they earn the respect and trust of their team by providing clear direction and fostering a collaborative environment focused on achieving shared goals. Effective leaders elevate those around them and create opportunities for their team members to grow, develop and pursue their own career aspirations."

What advice do you have for those who would like to someday lead a company, team or organization?

"Having a strong mentor — particularly one with demonstrated leadership experience — can play a critical role in your professional development. These individuals offer valuable perspective, provide honest and constructive feedback, and often serve as advocates when new opportunities arise within the organization. Additionally, stepping outside your comfort zone by taking on expanded responsibilities, new roles or strategic projects can further accelerate your growth and increase your visibility."

Did You Know?

Commerce Lexington has three leadership development programs to help people better connect with others and their community and region, while learning more about how to demonstrate leadership skills. **Leadership Lexington** is an 11-month program for local leaders with day sessions focused on different topics. **Leadership Central Kentucky** is a 10-month regional program that creates awareness and understanding of how each county's actions affect the others. **Emerging Leaders of the Bluegrass** is a comprehensive initiative that helps emerging leaders expand their capacity to perform in leadership roles. Visit commercelexington.com/leadership-development.html for more information.



Nick Nicholson began working for the law firm Stoll Keenon Ogden PLLC in 2007 and became a partner in 2015. He has served on a variety of committees that look at personnel and strategic opportunities for the firm. Nicholson said, “Law firms are somewhat unique in that we’ve all agreed to work for our partners’ best interests, which then should have a positive outcome for the individuals.” This mindset can also be applied to his involvement in other community entities like Commerce Lexington, where he has served on the organization’s Policy Council and currently serves as board chair. “We put aside individual motivation for a better community, which then results in a positive impact on all of our lives.”

What is your leadership style?

“I don’t have an exact description of my leadership style,” said Nicholson. “But, I will say that I try to listen to the varying perspectives from my team prior to allowing myself to develop an initial instinct on the way I want to solve a problem or develop a new strategy. Hearing from a litany of different perspectives seems to crystalize the right path in my mind. The right decision tends to seem like the only decision once your team has played out the various scenarios of each potential choice from their perspective.”



NICK NICHOLSON
Stoll Keenon Ogden
2026 Commerce Lexington
Board Chair

What makes an effective leader?

“Selflessness and vision. To be a good leader, one must keep an eye on the best interest of an entity, while also seeing what is best for their team. When those two interests align, you have the ability to truly create a winning synergy that benefits both the company and the team that supports it. It can be difficult to look past what is best for the whole, but it is vital to listen to the individuals that actually turn your vision into reality.”

What can people do or where should they go to hone their leadership skills in the community?

“Get involved early and often. When offered the opportunity to serve your community, do it and pay attention to those that have been involved before you. While it might sound cliché, the best way to hone skills is to watch those that have them and to identify how you can implement their traits in your daily life. Through repetition, skills become intuitive. My mentors’ words and actions echo in my head every time I make a decision. I often don’t realize I am following their voice or guidance until well after the decision is made.”

What advice do you have for those who would like to someday lead a company, team or organization?

“Never hesitate to get involved and be active. Often times a lion’s share of work is done by a few key individuals – whether it be for a company or a community board. Make sure you are one of those that is willing to do the work. Leadership will become inevitable when the company cannot envision success without your efforts.”



TOA GREEN
Owner/Operator
Crank & Boom Craft
Ice Cream

Toa Green grew up in the hospitality industry, took a short break for college, and returned to the industry when she moved back to Lexington in 2004. She has been a small business owner for 20 years and is currently the owner/operator of Crank & Boom Craft Ice Cream, a business that she and her husband, Mike, launched in 2013. Her daily responsibilities include troubleshooting problems, supporting her team, and casting a vision for the business’ long term and short term goals. Toa is a board member for Commerce Lexington, and previously served as vice chair of leadership development, as well as other committees across the organization. Crank & Boom was named Small Business of the Year in 2021.

What is your leadership style?

“I have a pretty laid back leadership style,” said Green. “I care deeply about the work we do and the people who do the work with me. I have high expectations of those around me and I always try to lead with as much empathy, kindness and compassion as I can.”

What makes an effective leader?

“I think a good leader is a good listener. They are intuitive and know how to motivate those around them towards a common goal.”

What has helped enhance your leadership skills?

“I have been involved with multiple programs that have helped enhance my leadership skills: Leadership Lexington, Leadership Central Kentucky, Leadership Kentucky, EMERGE Conference, Women’s Business Center of Kentucky. I have also served on multiple boards and commissions like Commerce Lexington, VisitLex, Kentucky Commission on Women, Commission for Small Business Innovation and Advocacy, etc.”

What can people do or where should they go to hone their leadership skills in the community?

“Absorb and learn as much as you can from others. Ask a lot of questions, and don’t be afraid to be vulnerable. Chase after any opportunity you can to learn and grow. Go after the things that feel uncomfortable and scary!”

What advice do you have for those who would like to someday lead a company, team or organization?

“Listen more than you talk. Learn everything you can from the people around you. Surround yourself with people you can learn from – professionally and personally.”



EXECUTIVE BOARD



Nick Nicholson
2026 Board Chair
Member
Stoll Keenon Ogden
PLLC



Kevin Atkins
City Representative
Chief Development
Officer
City of Lexington



Tucker Ballinger
Vice Chair, Talent &
Workforce Development
President & CEO
Forcht Bank



Stephanie Bell
At-Large Member
Vice President,
Government Affairs
Kinetic



Carla Blanton
Immediate Past Chair
Owner
Carla Blanton Consulting



Jonathan Caldwell
Vice Chair,
Communications
Senior Vice President,
Chief People Officer
Valvoline



Bishop Carter IV
At-Large Member
Owner
Elaine Allen LLC



Kimra Cole
At-Large Member
President & COO
Columbia Gas of
Kentucky



Luther Deaton
Vice Chair, Economic
Development
Chairman, President
& CEO
Central Bank & Trust Co.



Billie Dollins
Vice Chair, Leadership
Development
Executive VP, Central
Region President
Community Trust Bank



Larry Forester
Vice Chair, Community
& Minority Business Dev.
SVP, Commercial
Banking Officer
Forcht Bank



Branden Gross
Vice Chair, Public Policy
& Regional Engagement
Partner
Dentons



John Mahan
Regional Representative
Owner
Mahan Farms/
Sodworks



Danny Murphy
Vice Chair, Membership
& Engagement
Vice President &
Personal Trust Officer
Central Bank & Trust Co.



Bob Quick
Board Secretary
President & CEO
Commerce Lexington



W. Craig Robertson III
General Counsel
Partner
Bricker Graydon
Wyatt LLP



Debbie Smith
Treasurer
Lexington Market
Leader
Cherry Bekaert



Mary-Alicha Weldon
Board Chair-Elect
Lexington City President
& Commercial Banking
Executive for Kentucky
Fifth Third Bank

***NOTE: Executive Board Members also serve on Commerce Lexington's Board of Directors.**

2026 COMMERCE



Wallace Barber
Owner
State Farm Insurance



Dr. Stephen Behnke
CEO
Lexington Clinic



Jay Blanton
AVP, Chief
Communications
Officer
University of Kentucky



Crinda Francke
President and CEO
ExecuTrain



Eric Frankl
President & CEO
Blue Grass Airport



Anissa Franklin
Vice President
Urban League of
Lexington - Fayette
County



Brien Lewis
President
Transylvania University



Demetrus Liggins
Superintendent
Fayette County Public
Schools



Allen McDaniel
Executive Director
& CEO
Downtown Lexington
Partnership



Mary Quinn Ramer
President
VisitLEX



Becky Reinhold
Brokerage Manager, V.P.
Bluegrass Sotheby's
International Realty



Chris Roty
President
Baptist Health
Lexington



Elizabeth Woodward
Forensic Accounting
Director & Lexington
Market Leader
Dean Dorton



Preston Worley
Member
McBrayer PLLC



Dan Wu
Vice Mayor
City of Lexington



LEXINGTON BOARD OF DIRECTORS



Robert Burton
President
Kentucky American
Water



Dr. Eli Capilouto
President
University of Kentucky



Francisco Castro
Principal Agent and
Managing Partner
JCC Insurance Group



John Cioci
Senior Vice President
and Commercial
Relationship Manager
PNC Bank



Marilyn Clark
Economic Engagement
Manager
University of Kentucky



Dr. Robert DiPaola
Provost & Co-Executive
Vice President for
Health Affairs
University of Kentucky



Dr. Greg Feeny
President & CEO
Bluegrass Community
& Technical College



Ken Gish
Member
Stites & Harbison PLLC



Linda Gorton
Mayor
City of Lexington



Toa Green
Owner / Operator
Crank & Boom Craft
Ice Cream



Matt Grimshaw
Market President
CHI Saint Joseph Health



Mike Inman
President, Bluegrass
REALTORS
REALTOR,
Coldwell Banker
McMahan



Todd Johnson
Executive Vice
President
Building Industry
Association of Central
Kentucky



Patrick Keal
Director of External
Affairs
LG&E and KU Energy



Jennifer Miloszewski
Director-in-Charge,
Lexington Office
Blue & Co., LLC



Abdul Muhammad
Central Kentucky
Market President
WesBanco



Caitlin Neal
VP of Sales,
North America
Gratnells



Kim Ogle
Corporate
Communications,
Senior Manager
Toyota Motor North
America EA



Jordan Parker
Director of Business
Development
Traditional Bank



Manish Patel
President
MKP Management, Inc.



Michael Patterson
President
Denham-Blythe



Sarah Rowe
CFO
Gray Construction



Tate Russell
President
Kentucky Eagle, Inc.



Simon Scholte
Vice President,
General Manager
Kindeva



Rob Shear
General Manager
SRC of Lexington Inc.



Brian Sipe
General Manager
Central Bank Center



Hunter Stout
CFO
Keeneland
Association Inc.



Jana Syrcle
Partner
Frost Brown Todd LLP



Todd Ziegler
Central Kentucky
Market President
Republic Bank & Trust





An Evening With Commerce Lexington

JANUARY 29, 2026 | CENTRAL BANK CENTER | PHOTOS BY MAHAN MULTIMEDIA

PRESENTED BY



FIFTH THIRD

A crowd of about 900 people braved bitter cold and snowy conditions to attend An Evening With Commerce Lexington **presented by Fifth Third** on January 29. This year's event took place in the exhibit hall area of the convention center, as participants celebrated the success of the previous year and set the stage for moving forward during the 144th annual gathering of the area's business community.

The program featured annual awards recognizing community impact and volunteerism, which highlighted individuals and organizations that have had a significant impact on our organization and the community. **Debbie Smith**, Lexington Market Leader for Cherry Bekaert LLP, was the recipient of the **Volunteer of the Year Award** for her efforts in strengthening Commerce Lexington's financial position through her role as treasurer on the Executive Board.

The **Community Impact Award** was presented to the partners of the Central Kentucky Business Park Authority which is addressing a need for more shovel-ready land to attract and retain jobs across our nine-county region. The recipients of this award include **Scott County Judge-Executive Joe Pat Covington**, **Madison County Judge-Executive Reagan Taylor**, **Berea Mayor Bruce Fraley**, and **Lexington Mayor Linda Gorton**.

2026 Board Chair Nick Nicholson from Stoll Keenon Ogden PLLC said, "This past year, we made great progress in improving the quality of Lexington, but we can't rest on past successes and declare victory. We all have to be asking - How can we do better? What's next? We can and should be proud of our past, but we should never be content with our present."



Around 900 people attended An Evening With Commerce Lexington on January 29th.



Karen Harbin (Commonwealth Credit Union), left, presented Debbie Smith (Cherry Bekaert) with the Volunteer of the Year Award.



Keeana Boreman (Stoll Keenon Ogden), second from right, presented the Community Impact Award to the partners of the Central Kentucky Business Park Authority, including Berea Mayor Bruce Fraley, Lexington Mayor Linda Gorton, and Scott Co. Judge-Executive Joe Pat Covington. Not pictured was Madison Co. Judge Executive Reagan Taylor.



Mayor Linda Gorton



Kim Halbauer (Fifth Third)



Jennifer Palumbo (WLEX-TV)



Dale Morgan (Foundation 47) & Matt Frey (Kentucky American Water)



Daisy Brown (The Champion Therapy Center) & Judge Melissa Murphy



2026 Board Chair Nick Nicholson (Stoll Keenon Ogden)



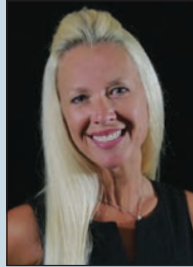
MARCH 17th @330 SERIES

Engagement & Culture: Why People Stay at Their Workplace in 2026

During the next Commerce Lexington @330 Series presented and hosted by 46Solutions on Tuesday, March 17, from 3:30 - 5:00 p.m. at the 46Solutions' showroom (161 Lexington Green Circle, Suite 140), Marcy Young will discuss engagement and culture in the workplace and how employers are working to retain their employees in 2026. Employee expectations have changed — and many organizations are feeling the impact through disengagement, burnout, and higher turnover. This interactive, insight-driven training equips leaders, managers, and professionals with the practical strategies needed to build stronger teams and create a workplace culture people want to stay in.

The presentation will explore how shifting expectations are impacting engagement, what behaviors influence whether employees stay, disengage, or leave, how culture is actually experienced by employees, and preventing burnout without sacrificing accountability or performance.

Participants will leave with clear takeaways, real-world examples, and actionable tools they can immediately apply to improve engagement, strengthen retention, and build a healthier, more



MARCY YOUNG

PRESENTED BY



sustainable workplace culture, as well as actionable insights and tools they can immediately apply to strengthen engagement, improve retention, and build a healthier workplace culture.

ABOUT THE SPEAKER:

Marcy Young, SHRM-CP, PHR, is a seasoned executive and business strategist with more than 30 years of experience helping organizations grow through people-centered leadership. Whether helping organizations navigate compliance complexity with clarity and confidence, addressing culture, leadership development, or workforce planning, Marcy brings practical insight grounded in real-world experience. At the core of Marcy's leadership is a deep commitment to integrity, stewardship, and service.

TO REGISTER:

The @330 events feature a topical presentation that is relevant to the success of entrepreneurs, business owners and business professionals. There is no cost to attend this members' only event. To register, visit commercelexington.com.

DENTONS

Trust the lawyers at Dentons to help navigate the complexities of employment law.

With offices in more than 170 locations, including Kentucky, Dentons is the world's largest global law firm.



Kimberly O'Donnell
Office Managing Partner



Sarah Laren
Partner

dentons.com

© 2025 Dentons. Dentons is a global legal practice providing client services worldwide through its member firms and affiliates. Please see dentons.com for Legal Notices.



EVENTS

MARCH 30 | 4:00 - 6:30 p.m.

NEW EVENT: Adapt. Compete. Grow. - A Small Business Forum

Small businesses are woven into the fabric of every part of our community and region. They are the backbone of our economy and an important source of innovation, economic growth, and prosperity for our country. Commerce Lexington believes in the power of small business, and many of our programs and services are available to help small businesses grow.

We are proud to announce a new event called **Adapt. Compete. Grow. - A Small Business Forum** on **Monday, March 30**, from 4:00 - 6:30 p.m. at The Campbell House (1375 S. Broadway). Our featured speaker will be Daron K. Roberts, a nationally-recognized speaker, who will present "Stay in The Deep End: A Playbook for Waging War Against Your Status Quo in 2026." When uncertainty hits, most businesses instinctively pull back—but that's exactly when opportunity appears. In *Stay In The Deep End*, you'll learn how to adapt without panic, compete without copying, and grow without waiting for perfect conditions. This talk challenges safe thinking and equips leaders with a mindset built for volatility, not comfort.

The event will also include a panel of small business owners, who will share some of the lessons they've learned to help ignite ideas for other small business owners.



DARON K. ROBERTS

KEYNOTE SPONSOR



SILVER SPONSOR:
Elaine Allen LLC
Kinetic

ABOUT THE SPEAKER:

Daron K. Roberts is a former NFL coach and award-winning college professor. Named as a "Top 20 Global Speaker" in 2024, Daron's clients range from professional sports teams to Fortune 100 companies. He is also the author of three books: *Microwins*, *A Kids Book About Empathy*, and *Call an Audible*. His weekly leadership series - "This Is Not About Sports" - prompted LinkedIn to name Roberts as its #1 Top Voice in Sports. He is a graduate of the University of Texas, Harvard Kennedy School, and Harvard Law School.

HOW TO REGISTER:

The cost to attend this event is \$59 for Commerce Lexington members, \$69 for non-members. The first 50 registered attendees will receive a free copy of Daron K. Roberts' book, *Call An Audible*. Register on-line today at commercelexington.com.

Scan to Register



TOPS

Reach **69,000+** Monthly Readers with **TOPS** Magazine!

GET IN TOUCH TODAY: ADVERTISING@TOPSMARKETING.COM • 859-543-8677 • TOPSINLEX.COM



FEB

MAR

APR

BE FEATURED IN...

**Wedding Marketplace
Event & Entertainment Venues**

BE FEATURED IN...

Leaders of Lexington
Reserve your exclusive category today!

BE FEATURED IN...

**Home & Garden Pros
Real Estate Marketplace**

Leadership Lexington Participates in Health & Human Services Day

By Ashley Holt, Bluegrass Care Navigators

Health & Human Services Day is always described as one of the most impactful days of the Leadership Lexington experience, and now I understand why. This day was intentionally designed to move us beyond theory and into the real, lived experiences of health, recovery, access, and care across our community. From the very beginning, it was clear this day would challenge us to rethink leadership, systems, and responsibility.

We started the morning at Bluegrass Care Navigators, grounding the day in a simple but powerful truth: health care is not just about treatment—it's about people, dignity, and meeting individuals where they are. Early conversations set the tone. Leadership in health and human services requires both strategy and heart. We explored how serious illness care, addiction, recovery, and mental health are deeply connected, and how sustainable solutions must center on compassion, access, and collaboration.

As the day went on, we stepped out into the community to see this work in action. Visiting Lexington Rescue Mission and its hub of partner organizations, including Jubilee Jobs and Isaiah House, was a powerful reminder that health outcomes are shaped long before someone ever enters a hospital.

One of the most meaningful parts of the day was



(Photo by Mahan Multimedia)

seeing firsthand how food insecurity directly affects health. In the afternoon, we shifted to innovation and specialized care. Learning about behavioral health crisis response through the University of Kentucky EmpATH model and pediatric specialty care at Shriners Children's Lexington highlighted how innovation, clinical excellence, and leadership can transform patient experiences when systems are built with intention.

Throughout the day, several themes kept coming up: collaboration over silos, prevention over reaction, and equity as a core leadership responsibility.

[Full Recap at commercelexington.com/news](https://commercelexington.com/news)

PRESENTED BY



PLATINUM SPONSORS



KEENELAND



a PPL company



DAY SPONSOR



Shriners Children's
Lexington

ORIENTATION SPONSOR



MEDIA SPONSOR



NAME BADGE SPONSOR

REPUBLIC BANK

Time to thrive.
Member FDIC

COMMERCE LEXINGTON MEMBER DISCOUNTS

Member Shield Provides Cost Savings on Managed IT Services

iSAFE Complete, a premier Managed IT Services Provider in Central Kentucky has partnered with Commerce Lexington to introduce the iSAFE Member Shield Program to provide chamber members with exclusive benefits on IT support and cybersecurity services. All active chamber members will receive a 10% discount on managed IT services, making professional IT support, cybersecurity solutions and compliance more accessible and affordable.

Members are entitled to a free cybersecurity risk assessment valued at \$2,500. Even if you have an IT provider or in-house team this is a great way to get a third party evaluation of your cybersecurity posture and ensure that you are doing everything that you should be doing to protect your business. This program removes the minimum user requirement for businesses with fewer than 10 employees, allowing them to leverage enterprise-level IT support at an affordable cost. Find out more about this member discount program at www.isafecomplete.com/commerce-lexington-member-shield.



Members Save on Health Insurance for Small Business

ChamberAdvantage is a health coverage solution that gives small businesses an easier, more affordable way to offer health benefits to employees, with a lot less worry. Commerce Lexington has teamed up with Anthem Blue Cross and Blue Shield (Anthem) to offer ChamberAdvantage, a self-funded option. It's offered to groups with 2 to 50 full-time employees so they can join together in a large, self-funded pool and share in the overall claims risk, as well as get financial protection backed by Anthem's stop loss coverage. It's a great alternative to Affordable Care Act (ACA) plans that offers you lower costs and more predictable rates — just like large corporations.

ChamberAdvantage also offers: Competitive, medically underwritten rates; Predictable, fixed monthly payments; Flexibility in choice of benefit plans; Anthem's broad Blue Access network and Essential drug list; and a wide array of plan options. Contact your local Anthem appointed insurance broker or email Dawn Flickinger at dflickinger@commercelexington.com for more information.



WELCOME NEW MEMBERS

New Commerce Lexington Members & Top Investors From December 15, 2025 to January 25, 2026

NEW SILVER LEVEL PREMIER PARTNERS

Collision Masters of Lexington

Auto Body Repair & Paint
Main Contact: Josh Wilson
765 E. New Circle Rd., 746
Westland Dr., Lexington, 40505
Phone: (859) 753-3878
www.collisionmastersoflexington.com

Trace Creek Construction, Inc.

Construction
Main Contact: Amanda Siegelin
1792 Alysheba Way, Suite 155
Lexington, KY 40509
Phone: (606) 796-3867
www.tracecreek.net

Triple D Detailing

Auto Detailing
Main Contact: Josh Wilson
765 E. New Circle Rd.
Lexington, KY 40509
Phone: (859) 407-5708
www.dddex.com

NEW BRONZE LEVEL PREMIER PARTNER

Skylar Alexander Contracting

Construction-Remodeling
Main Contact: Nicholas Wolter
Lexington, KY
Phone: (859) 618-3181
www.skylaralexanderco.com

Advanced Business Solutions

Information Technology
Main Contact: John Clark
1745 Payne St., Louisville, KY 40205
Phone: (502) 896-2557
<https://advancedbusinesssolutions.com>

American Residential Technologies

Electric Contractors
Main Contact: Brandon Wolf
34 Westchester Drive
Winchester, KY 40391
Phone: (859) 361-1476
www.arthomesystems.com

Artemis Solutions

Business Consultants
Main Contact: Sarah Pickering
190 Market St., Lexington, KY 40507
Phone: (859) 514-2979
www.artemisvf.com

Bluegrass Precision Wellness Lexington

Medical Services
Main Contact: Curtis Koons
250 E. Short St., Lexington, KY 40507
Phone: (606) 424-7999
www.bluegrassPW.com

Bluestone Landscape Management

Landscape Contractors
Main Contact: Mike Wood
676 Kennedy Rd.
Lexington, KY 40511
Phone: (859) 346-7721
www.bluestonelandscapemgt.com

Brian's Bluegrass Automotive

Auto Body Repair & Paint
Main Contact: Brian Nigoff
749 W. Main St
Lexington, KY 40508
Phone: (859) 252-7426
<https://briansbluegrassautomotive.com>

Cannabuzz

Bar
Main Contact: Annie Rouse
938 Manchester Street
Lexington, KY 40508
Phone: (859) 309-0771

Cetera Investors

Investment Planning Consultants
Main Contact: Mary Ellen Fiffis
201 E. Main Street, Ste 520
Lexington, KY 40507
Phone: (859) 272-7697

Control Power Maintenance Electric, Inc.

Electric Contractors
Main Contact: Noel Hoskins
2057 Mercer Rd.
Lexington, KY 40511
Phone: (859) 255-7462
www.cpmelectric.com

Crawlspace Medic Of Lexington

Home Repair & Maintenance
Main Contact: Scott Talley
2520 Regency Rd., Suite 110
Lexington, KY 40503
Phone: (859) 467-8000
www.crawlspaceclinic.com

Derby Strong Garage Doors

Garage Doors
Main Contact: Guy Meital
601 Lagonda Ave., Suite 60
Lexington, Ky 40505
Phone: (859) 436-2954
<https://derbystronggaragedoors.com/locations/lexington>

EagleView Roofing LLC

Roofing Contractors
Main Contact: David Frame
366 Waller Ave, Ste. 103
Lexington, KY 40504
Phone: (859) 268-1165
www.eagleviewroofing.net

Enhancing Life Personal Training

Fitness Centers
Main Contact: Lucia Rivera Hendricks
2663 Regency Rd.
Lexington, KY 40502
Phone: (859) 251-2707
www.enhancinglifefgym.com

EOS-Dean C. Durbin Enterprises, LLC

Business Consultants
Main Contact: Dean Durbin
131 Prosperous Place, Suite 20B
Lexington, KY 40509
Phone: (859) 559-1399
<https://implementer.eosworldwide.com/dean-durbin>

Exacta Accounting, LLC

Accountants
Main Contact: Graves Dickey
Lexington, KY
Phone: (859) 519-0978
www.exactaaccounting.com

Honorable Order of Kentucky Colonels - Thoroughbred Chapter - Lexington

Non-Profit Organizations
Main Contact: John Kiebler
Lexington, KY
Phone: (859) 991-9372
<https://thoroughbredhokc.org>

Hooters

Restaurants
Main Contact: Patrick Hoover
3101 Richmond Rd., Unit 315
Lexington, KY 40509
Phone: (859) 269-8521
www.hooters.com

JQ Financial Solutions

Accountants
Main Contact: Jennifer Quillen
138 E Reynolds Rd., Ste. 201
Lexington, KY 40517
Phone: (859) 317-8672
www.jqfinancialgroup.com

Judge Will Moynahan

Attorneys
Main Contact: Will Moynahan
Lexington, KY
Phone: (859) 246-4107
www.willmoynahan.com

KORE Academy

Schools-Private
Main Contact: Stephanie Spires
3150 Tates Creek Road
Lexington, KY 40502
Phone: (859) 971-7129
www.KoreAcademy.org

Le Dessus Table Settings

Event/Party Supplies- Retail
Main Contact: Kara Hill
Lexington, KY
Phone: (859) 489-1322
www.ledessus.com

Main & Vine

Hotel Management
Main Contact: Jacob Van Winkle
1040 Monarch St., 3rd Floor, Ste. 300
Lexington, Kentucky 40513
Phone: (859) 779-5570
www.mainandvine.co

NeuroAnimation Brain Growth and Recovery Center, Lexington, Kentucky

Health & Wellness
Main Contact: Jim Marshall
1056 Wellington Way, Suite 130
Lexington, Kentucky 40513
Phone: (859) 346-5144
www.neuroanimation.com

Oldfield Patio Enclosures, Inc.

Construction
Main Contact: Ashley Newsome
1315 Winchester Rd., Suite 347
Lexington, KY 40505
Phone: (859) 231-8877
www.oldfieldsunrooms.com

Paint EZ of Lexington & Central KY

Painting Contractors
Main Contact: Brian Ruth
2321 Sir Barton Way, Suite 140, #113
Lexington, KY 40509
Phone: (859) 444-5766.
<https://paintez.com/lexington>

Pathways Learning Academy

Childcare/Daycare/Education Center
Main Contact: Christa Stocker
4128 Todds Rd.
Lexington, KY 40509
Phone: (859) 535-0494
www.pathwayslearningacademy.com/your-local-school/lexington-ky-9317

Poplar Hospitality

Travel Management - Corporate
Main Contact: Anne Hardy
Lexington, KY
Phone: (859) 351-8438
www.poplarhospitality.com

Realtor Markus Cross

Realtors
Main Contact: Markus Cross
324 Chinoe Rd.
Lexington, KY 40502
Phone: (859) 893-1809
www.markuscross.com

River Ridge Dermatology

Physicians & Surgeons, Dermatology
Main Contact: Robert Repass
2424 Sir Barton Way, Suite 125
Lexington, KY 40509
Phone: (859) 290-6990
www.riverridgederm.com

Sweetgrass Granola

Retailers
Main Contact: Samantha Ayres
808 N. Limestone, Suite 1
Lexington, KY 40505
Phone: (814) 701-8004
www.sweetgrassgranola.com

PERSONNEL ANNOUNCEMENTS

Corporate Moves, Company Awards and Notable Milestones



The Agency welcomed the following new agents: **Michael Hamilton, Tierra Newkirk, Jacob Golovoy, Randy Adkins, Jonathan Moles, David Hobbs, Jennifer Green,** and **Patricia Barfield-Vazquez.**

Besten & Dieruf, PLLC welcomed **Andrew Winningham** as a staff accountant. He will be working with the bookkeeping and accounting services team.

Central Bank & Trust Co. recently promoted several individuals at the bank, including **Cameron Abney** to Madison County Market President, **Christopher Schnelle** to vice president, director of financial intelligence-security, **Shane Anderson** to vice president, commercial lending manager, and **Clayton Rogers** to vice president, retail development officer. In addition, **Michael Burns** joined Central Bank as vice president, personal trust officer.

Central Bank & Trust Co. announced the selection of eight new members to its Lexington Advisory Board, including **Mike Kerwin** (Mike Kerwin Homes), **Daren Turner** (Turner Property, LLC), **Laura Gardner** (The Thoroughbred Club), **Jon Woodall** (McBrayer & Woodall Construction), **Thomas Underwood** (Christie's International Real Estate), **Pete Wheeler** (Wheeler Financial Solutions), **Crinda Francke** (Executrain), and **James Frazier** (McBrayer). They join **Ron Johnston, Kevin Doyle, Pam Shepherd, Kenny Schomp, Bill Shively, Al Ruggles, Lee Howard, Casey Dunn, Brian McCarty, Jeff Yearly, Shelby Marshall, Lucas Campbell, Jack Drake, Adolph "Chip" Rupp, Rick Avare,** and **John Irvin, Jr.**, who are continuing to serve.

CLARK Material Handling Company was recognized with a Destiny Award by Kentucky Employers' Mutual Insurance (KEMI) for its commitment to workplace safety. A nine-time recipient, CLARK Material Handling Company was selected after meeting a stringent set of criteria set forth by KEMI. The award reflects the company's commitment to fostering a culture where every employee plays an active role in maintaining a safe workplace through training, hazard awareness, and continuous improvement initiatives.

For the 17th consecutive year, **Community Trust Bank** earned the "Gold Lender Award" from the U.S. Small Business Administration (SBA) as Kentucky's top volume SBA 7(a) Community Bank lender in federal fiscal year 2024-25. In total, the SBA authorized 74 guaranteed 7(a) loans providing access to \$18,029,200 for Community Trust Bank customers in four states during the fiscal year.

Dickinson Wright announced that three of the firm's attorneys in the Lexington office have been named to *2026 Kentucky Super Lawyers*, including **Jeffrey L. Gehring, Brian M. Johnson,** and **David A. Owen.** Meanwhile, **Logan J. Mayfield** was recognized on this year's *Kentucky Super Lawyers Rising Stars* list. Super Lawyers is a listing of outstanding attorneys from more than 70 practice areas who have attained a high degree of peer recognition and professional achievement. Rising Stars include the top up-and-coming attorneys in the state – those who are 40 years old or younger, or who have been practicing law for 10 years or less.

Thirty-four **Dinsmore & Shohl** attorneys from the firm's Lexington, Louisville and Covington offices earned recognition on the *2026 Kentucky Super Lawyers* list, including **Mindy Barfield, Anthony Bonner, Christopher R. Cashen, Chauncey S.R. Curtz, Barbara B. Edelman, Ellen Arvin Kennedy, Grahmn N. Morgan, John R. Rhorer, Jr.,** and **Terri R. Stallard.** Local attorneys highlighted on the *Rising Stars* list included **Houston Bragg, Kyle Bunnell, Seth Church, Kristeena L.**

Johnson, Sara A. Johnston, and **Donald C. Morgan.** Additionally, four associates in Lexington were promoted to senior associate, including **Kyle Bunnell, Cassandra Carter, Seth Church,** and **Donald Morgan.**

Lexington Christian Academy announced the appointment of **Ben Conner** as its new director of philanthropy, a leadership role that reflects the school's continued commitment to mission-driven growth, community partnership, and long-term sustainability.

Now affiliated with Keller Williams Legacy Group, **Melia Realty Group** welcomed two new partners, **Evan Allgauer** and **Angi Comley,** further strengthening its commitment to delivering a best-in-class, five-star concierge real estate experience. In addition, founder and real estate advisor, **Melia Hord,** has earned the designation of Certified Divorce Real Estate Expert (CDRE®) – making her the first and only CDRE® in the state of Kentucky. This elite certification represents the highest standard of training nationally for real estate professionals serving the complex intersection of family law and residential property.

Christian Motley of **Motley Advisor's LLC** was appointed senior vice president, chief program officer at Results for America, a national nonprofit that partners with governments use evidence and data to increase the impact of public sector investments. In this role, he will lead RFA's government-facing work across the local, state, and federal levels, aligning efforts to help leaders achieve better results.

Republic Bank & Trust Company was recently recognized as one of America's Best Regional Banks & Credit Unions 2026 by *Newsweek* and Plant-A Insights Group. This marks the third consecutive year Republic has received the honor. Each year, *Newsweek* and Plant-A Insights Group recognize companies that are committed to powering local economies by supporting small businesses, financing community projects, and providing reliable access to everyday banking services. *Newsweek* and Plant-A Insights Group conducted a large-scale study based on the analysis of dozens of metrics, more than 140,000 interviews, and more than 2 million online reviews to select the top regional banks and credit unions.

Saint Joseph Health announced the hiring of **Terrence (Terry) Wooten,** MHA, as the new president of Saint Joseph Hospital on Harrodsburg Road. In addition, Saint Joseph Health welcomed **Samantha Barry,** MSN, FNP-C, to its team at Saint Joseph Medical Group – Gastroenterology in Lexington.

Stites & Harbison, PLLC recently promoted Lexington attorney **Gentry C. Collins** to Member (Partner). In addition, attorney **Elizabeth "Betsy" Johnson** was appointed to the Carnegie Center for Literacy & Learning board of directors. The appointment was confirmed by the Lexington-Fayette Urban County Council.

Keeana Sajadi Boarman has joined **Stoll Keenon Ogden's** Lexington office as equity member in the Business Services and Mergers & Acquisitions practice groups. Boarman has more than 15 years of legal experience.

SUBMIT PERSONNEL ANNOUNCEMENTS:

Submit company awards, personnel changes, additions, or promotions to mturner@commercelextion.com. Information is published in the order received and as space permits.

● cámara de ● ● comercio lexington

Commerce Lexington Inc.
330 East Main Street, Suite 100
P.O. Box 1968
Lexington, KY 40588-1968

Periodical
Postage PAID
at Lexington,
Kentucky

COMMERCE LEXINGTON CALENDAR OF EVENTS:

FEBRUARY 2026:

- 12** Leadership Lexington presented by Community Trust Bank: Education Day Session.
- 18** Leadership Central Kentucky presented by LG&E & KU at Scott County.

MARCH 2026:

- 4** Greater LEX Day at the Capitol at Capitol Annex in Frankfort, 10:00 a.m. - 1:00 p.m.
- 5** Business Link hosted by God's Pantry Food Bank (2201 Innovation Drive), 4:00 - 6:00 p.m. - SEE PAGE 5
- 12** Leadership Lexington presented by Community Trust Bank: Arts Day Session.
- 17** @330 presented & hosted by 46Solutions (161 Lexington Green Cir., Suite 140), 3:30 - 5 p.m. - SEE PAGE 11
- 18** Leadership Central Kentucky presented by LG&E & KU at Woodford County.
- 30** Adapt. Compete. Grow. - A Small Business Forum, at The Campbell House (1375 S. Broadway), 4:00 - 6:30 p.m. - SEE PAGE 12



During the January @330 Series event, Stephanie Greene discussed Emotional Intelligence. Don't miss the next @330 event on March 17th from 3:30 - 5:00 p.m. (Photo by Commerce Lex. Staff)